



MEMBER MATTERS

Member MATTERS

Truly Local Truly Yours
Q1 2026

ANNUAL MEETING
APRIL 23, 2026

A local treasure for 80 years!

Annual Meeting

Our 80th Annual Meeting will be held on April 23rd, and we would love for you to join us! We will be serving dinner, have music, gifts and prizes. RSVP is required to attend. Reserve your spot by Friday, April 10th!

Thursday, April 23 | 6PM - 8PM
DoubleTree Hotel
530 Richards Dr. -Manhattan, KS 66502

[More Information & Online RSVP](#)

OUR CARDS HAVE CHANGED

Debit Card Credit Card

New Credit & Debit Cards have arrived!

We're excited to introduce our NEW credit and debit card programs! These upgraded cards are part of our ongoing commitment to enhancing your member experience—bringing you improved features, added convenience, and stronger security you can count on every day. From safer transactions to easier account management, these cards are designed with you in mind.

Have you experienced all of the benefits? Click the button below to learn more about what your new cards can do for you!

[Find out more about your new cards](#)



AUTO LOANS

We're here to help with our EVERYDAY auto loan rates as low as 4.49% APR*. Good for refinances from other financial institutions & purchases when you meet the following requirements:

- Set up Automatic Payments
- Set up Online Banking
- Sign up for eStatements
- Start your application today!

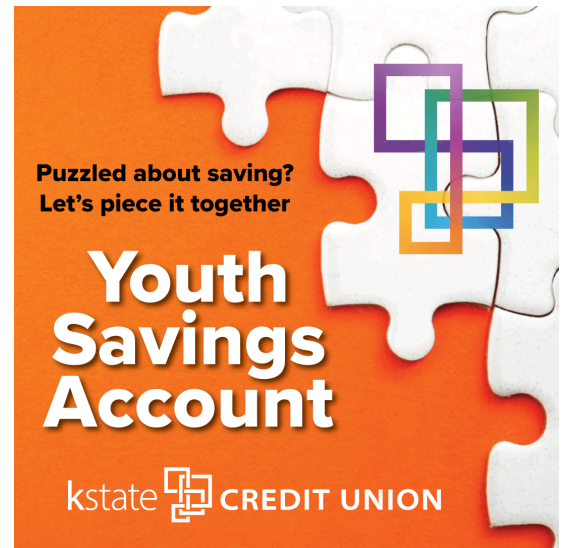
[APPLY NOW](#)

*APR = Annual Percentage Rate. Rates are based on creditworthiness. Maximum term is dependent upon year, mileage, and amount financed. Vehicles with over 125,000 miles may be subject to a higher APR. Not valid on existing kstate CREDIT UNION loans. Insured by NCUA

APRIL IS YOUTH MONTH

April is Youth Month at kstate CREDIT UNION—a time dedicated to helping young savers build a strong financial future. We invite members to open a youth savings account for the children in their lives and start them on a positive financial path. As a fun bonus, every new youth account opened in April will receive a special puzzle to celebrate their savings journey!

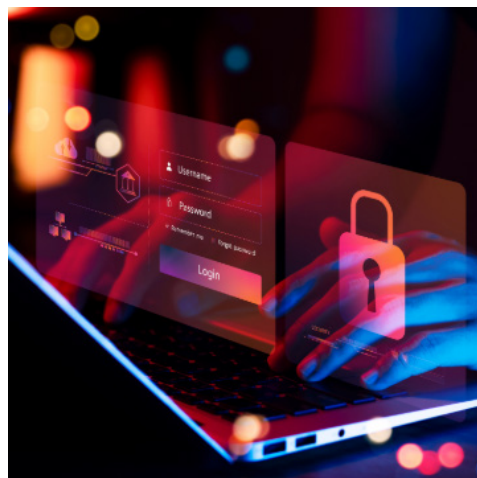
[Learn more about Youth Savings accounts](#)



FINANCIAL EDUCATION



Underrated Products at kstate CREDIT UNION



What's the Password?

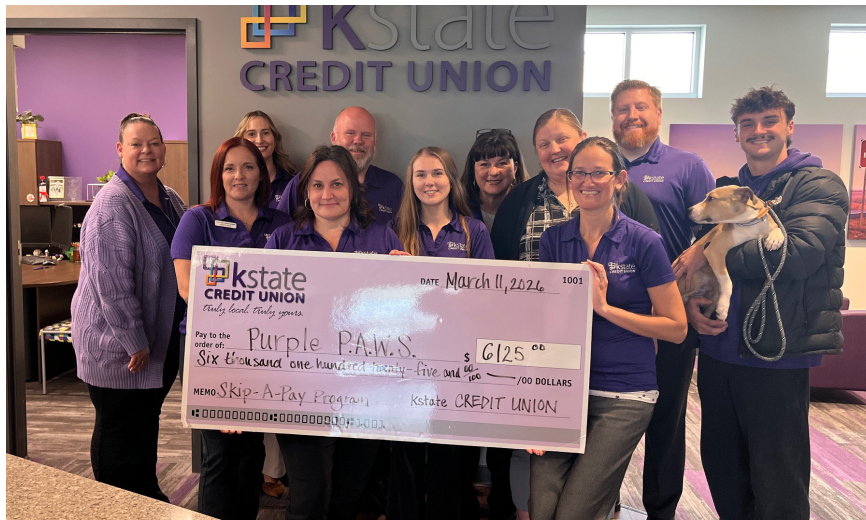


When is Debt Consolidation Helpful?

IN OUR COMMUNITY



A big THANK YOU to our amazing team members that participate in our Employee Jeans Donation Program! Team members have the option to purchase \$5 jeans days throughout the year, with every dollar going directly to support a local organization. We were proud to present a check for \$6,156 to Wonder Workshop Children's Museum in February!



In March, we were proud to present Purple Power Animal Welfare Society with a check for more than \$6,125 from our Holiday Skip-A-Pay program! Each year, members with qualified loans can choose to skip their November or December payment in exchange for a small donation. A portion of those proceeds is then given to a local organization, making the program a benefit for both our members and our community.

Thank you to all of the members who participated and helped make this donation possible!

